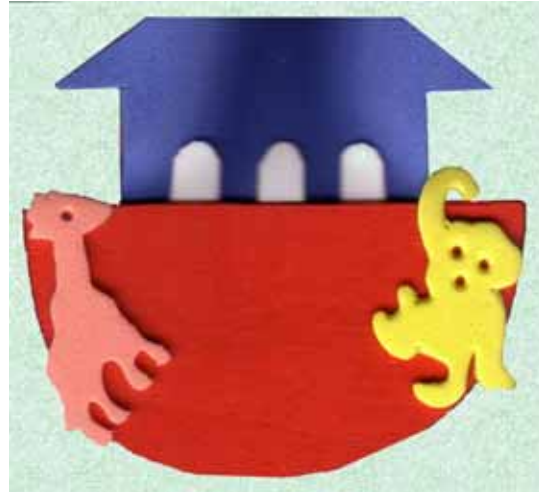


Noah's Ark Peg Magnet

Materials: (to make 1)
Material for base of ark (eg. foam, thick card, wood)
Paint for base (if needed)
Fun Foam for top and windows
Precut foam animals
Peg
Magnet
Craft Glue



Method:

1. Cut out ark base, top and windows.
2. Paint ark base if necessary.
3. Glue top onto back of base and glue windows into place.
4. Glue on animals.
5. Glue peg onto back and then glue magnet onto peg.

